

Helping ambitious SMEs  
innovate and grow internationally

Think bigger  
**Go further**

[een.ec.europa.eu](http://een.ec.europa.eu)



# Research Promotion Foundation

**National Agency responsible for the support and promotion of research, technological development and innovation in Cyprus**

**Established: 1996      By: Government of the Republic of Cyprus**

Design and manages  
research and  
innovation  
programmes and  
activities

Supports the  
participation of Cypriot  
researchers in  
international research  
activities

The background of the slide features a hand pointing towards a target symbol. The target is composed of concentric circles and is overlaid on a network of glowing blue lines. In the background, a world map is visible, rendered in a dotted, light blue style. The overall theme is global connectivity and business support.

# The world's largest support Network for SMEs with international ambitions

[een.ec.europa.eu](http://een.ec.europa.eu)



# Boosting growth and jobs

1

The Enterprise Europe Network is a key instrument in the EU's strategy to boost growth and jobs.

2

Launched in **February 2008** by the Commission's DG GROW

3

Co-financed under the EU's **COSME** and **HORIZON 2020** funding programmes  
(Encouraging competitiveness and innovation of European SMEs)

4

Total funding of over **180 million EURO**



**3000**

LOCAL  
EXPERTS



**600+**

LOCATIONS



**60+**

COUNTRIES  
WORLDWIDE

# Based in your region and connected to the world



# BUSINESS SUPPORT CENTRE CYPRUS (BSC)



National Consortium, **member of the Enterprise Europe Network**, offering free of charge, its services in Cyprus.

---

Coordinator: **Research Promotion Foundation**

Partners: **Cyprus Chamber of Industry and Commerce and European Office Cyprus**



# How do we help?



We combine **international business expertise** with **local knowledge** to take your innovation into new markets.

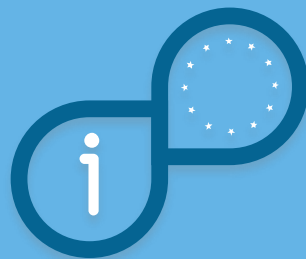
---

# Our services

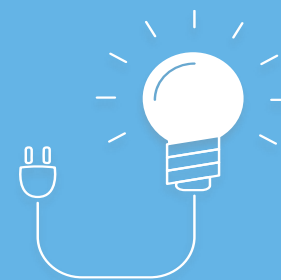
## International Partnership



## Advisory Support



## Innovation Support



# A broad range of services for growth-oriented SMEs

## INTERNATIONAL PARTNERSHIPS

Partnership database

Brokerage events

Company missions

## ADVISORY SUPPORT

Advice on EU laws and standards

Market intelligence

IPR expertise

## INNOVATION SUPPORT

Access to finance and funding

Innovation Management Services

Technology transfer

# How it works: international partnerships

The Network's business database contains thousands of company profiles to find the perfect match. In addition we organise:

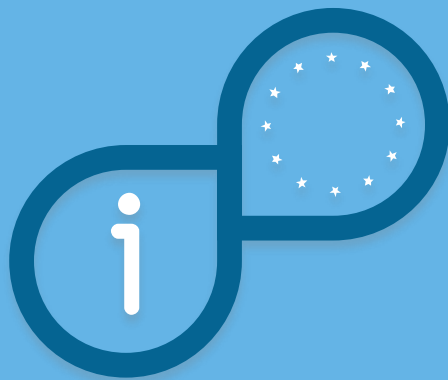
**Matchmaking events** across Europe where SMEs can meet potential business partners in person.

**Company missions** where we set up and prepare you for targeted international meetings with strong business prospects



# How it works: advisory support

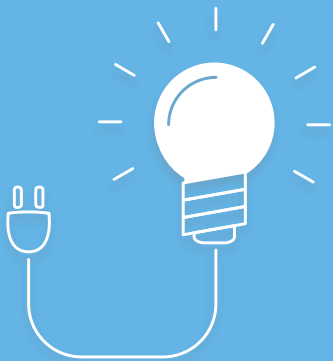
The Network's experts provide tailor-made advice



- Practical advice on doing business in another country
- Identifying the best market opportunities for your business
- Information on EU laws and standards
- Advice on intellectual property
- Facilitating SME feedback on EU rules

# How it works: innovation support

Tailored support packages to steer you onto the fast track to success



- Advice and help for innovative SMEs to access R&I funding (H2020, SME Instrument ...)
- KAM services for SME Instrument beneficiaries
- Personalised support to help shape innovation potential into international commercial success
- Help in finding the right technology to improve your innovation
- Help in finding the finance it needs to grow.

# It works! Satisfied, successful SMEs



**SMEs**  
who use the Network  
**grow on**  
**average**



# Boosting growth and creating jobs in the EU (2008 - 2014)



**11,000  
companies**  
have signed  
business, technology  
or research  
partnerships



**90,000  
companies**  
attended international  
brokerage events and  
company missions



**1.7  
million**  
people  
participated  
in events



**70,000  
targeted**  
business  
meetings  
every year



**600,000  
questions**  
on EU issues  
answered



# Boosting growth and creating jobs in the EU (2008 - 2014)



**13,000**

**Business  
Connections**

Via B2B matchmaking  
with companies  
outside the EU



**10,000**

**Technology**

and business offers  
& requests available



**7,000**

**SMEs**

Connecting  
every month



**13,000**

**Technology**

audits and business  
reviews per year

# 17 key sectors

Network experts in 17 key sectors have teamed up to provide you with customised support.



Aeronautics  
and space



Agrofood



Automotive, Transport  
and Logistics



BioChemTech



Creative  
Industries



Environment



Healthcare



ICT Industry &  
Services



Intelligent  
Energy



Maritime Industry  
and Services



Materials



Nano and micro  
technologies



Services and  
Retail



Sustainable  
Construction



Textile & Fashion



Tourism and  
Cultural Heritage



Women  
Entrepreneurship



We are here to help you?

# Contact us

George Christou

+357 22205030 | [gchristou@research.org.cy](mailto:gchristou@research.org.cy)

[www.research.org.cy](http://www.research.org.cy) | [www.bsccyprus.org.cy](http://www.bsccyprus.org.cy)